

# New South Wales Cherub State Championships

## SAILING INSTRUCTIONS

### 2011/2012

These Sailing Instructions will apply for events conducted at various venues by host clubs for the NSW Cherub Association State Championships.

#### 1 RULES

- 1.1 The Organising Authority is the Cherub Association of NSW.
- 1.2 The Conducting Authorities are the host clubs on their respective dates as shown in the NOR.
- 1.3 All races will be governed by the rules as defined in the current Racing Rules of Sailing.
- 1.4 The relevant class rules of measurement shall apply to boats sailing in races at all venues.
- 1.5 Harbour control regulations laid down by the NSW Maritime Authority will apply and will be detailed in the Sailing Instructions amendments issued by the host club. Any venue specific rules will also be covered in the competitors briefing

#### 2. NOTICES TO COMPETITORS

- 2.1 Notices to competitors will be posted on the **official notice board** of the venue sailing club.
- 2.2 The program of races, courses and starting times will be posted on the **official notice board** of the venue sailing club.

#### 3. CHANGES TO SAILING INSTRUCTIONS

- 3.1 Any change to the sailing instructions will be posted on the official notice board at least two (2) hours before the scheduled start time of the race.
- 3.2 However, any change to the schedule of races will be posted on the official notice board by 1700 hours, at least 7 days prior to the date on which the race is scheduled to be re-sailed.
- 3.3 Changes may also be posted on the Cherub website and Facebook group. Clubs affected by the changes will also be notified by the Race Secretary.

#### 4. SIGNALS MADE ASHORE

- 4.1 Signals made ashore will be displayed on the flag mast of the host club.
- 4.2 When flag AP is displayed ashore, '1 minute' is replaced with 'not less than 15 minutes.'

#### 5. SCHEDULE OF EVENTS

- 5.1 Races to be sailed and their venues are shown in the 2011-2012 NOR, which is available on the Cherub Class website.
- 5.2 Classes to be started, the sequence of starts and the time of the warning signal for each start will be posted on the venue course notice board at least 60 minutes prior to the warning signal for the first race on each course.
- 5.3 The warning signal for the first start will normally be signalled at 1300 hours.

#### 6. CLASS FLAGS

The Class flag will be a red heart shape on a white background or a white heart on a red background.

#### 7. RACING AREA

The racing area for each heat will be displayed on the venue Official Notice Board 2 hours before the heat start time.

#### 8. THE COURSES

- 8.1 Courses shall be triangular unless triangular courses cannot be sailed in the area associated with the host club.
- 8.2 At venues at which non-triangular courses will apply (Clause 8.1), the course diagrams will be posted on the course notice board at least 60 minutes prior to the warning signal for the first race on each course.
- 8.3 At venues where triangular courses apply the courses shall be as set out in Diagram A below.
- 8.4 The course diagram will be drawn as port hand to show the layout of the course and the order in which marks shall be passed.
- 8.5 No later than the warning signal, the race committee signal boat will display the approximate compass bearing of the first mark and a red or green flag to indicate the direction of racing. A red flag will indicate a port hand course or a green flag will indicate a starboard hand course is set.
- 8.6 The course length will be at the discretion of the Race Officer; however the approximate time for a race will be 45 / 90 minutes for the fastest boat to complete a short / long race.

Courses to be sailed shall be set with a race length that takes in to account the expected breeze conditions. The length of the course shall be set such that the targeted race time for a long format race is 90 minutes and the target race time for a short format race is 45 minutes. Courses shall not be set with a windward leg of less than 0.35 of a nautical mile. A course length calculator has been provided to assist PRO's in creating a course length (based on forecast wind values) that will ensure the majority of boats finish within the time limit. The Excel spreadsheet will be made available to clubs organising events.

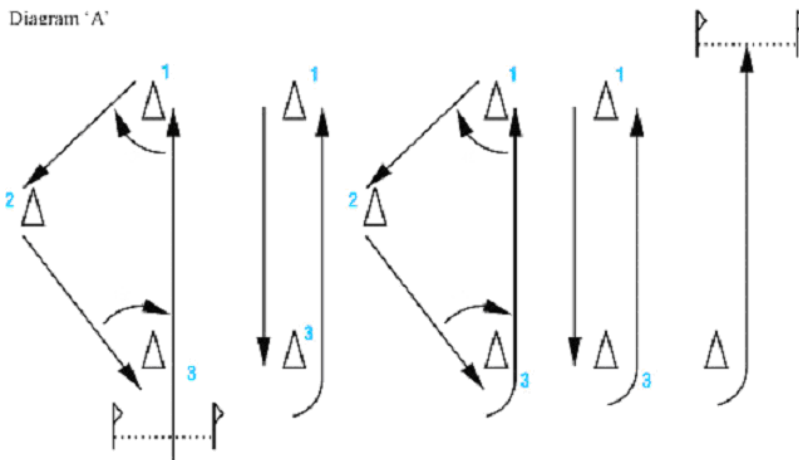


Diagram "A" shows the triangular course, including the approximate angles between legs, the order in which marks are rounded or passed, and the side on which each mark is to be left.

Mark 1 will be approximately (1) nautical mile from Mark 3 for a race. The Finish line will be approximately 100 metres to windward of Mark 1.

The long course shall be: -

Start – 1 – 2 – 3 – 1 – 3 – 1 – 2 – 3 – 1 – 3 – Finish.

Note: Mark 3 on 1st leg and Mark 1 on last leg has NO required side

The short course shall be: -

Start – 1 – 2 – 3 – 1 – 3 – Finish

PORT – Round all marks of the course to port.  
STARBOARD – Round all marks of the course to starboard.

Prior to or at the Preparatory Signal, the Start Boat will display either: -

Red Flag – meaning pass all marks to port, or  
Green Flag – meaning pass all marks to starboard.

The angles shown in Diagram "A" are approximate only and may be altered to allow for course location and prevailing conditions.

## 9. MARKS

9.1 Marks will be as specified by the host club. They may be displayed at the competitors briefing.

## 10. AREAS THAT ARE OBSTRUCTIONS

Each host club will advise on specific local obstructions.

## 11. THE START

11.1 Races will be started using rule 26 and the following signals:

Signal	Visual signal	Sound signal	Minutes before start
Warning signal	Display class flag	1 sound	5
Preparatory signal	Display flag P or flag I or black flag	1 sound	4
One minute signal	Remove flag P or flag I or black flag	1 sound	1
Start signal	Remove class flag	1 sound	0

11.3 The starting line will be between an orange flag displayed on the race committee signal boat at the starboard end and a starting mark at the port-end.

11.4 Boats whose warning signal has not been made shall avoid the starting area during the starting sequence for other races.

11.5 Rule A4 is changed and a boat starting later than 10 minutes after the start will be scored "Did Not Start" without a hearing.

## **12. CHANGE OF THE NEXT LEG OF THE COURSE**

12.1 To change the next leg of the course, the race committee will move a mark or move the finishing line.

## **13. THE FINISH**

The finishing line will be between an orange flag displayed on the race committee signal boat at the starboard end and a finishing mark at the port-end.

## **14. PENALTY SYSTEM**

Rules 44.1 and 44.2 will apply.

## **15. TIME LIMITS**

15.1 Time limit to complete the short race shall be 1.5 hours. Boats finishing more than 30 mins after the first boat finishes, or after the time limit, whichever is the earlier, shall be scored "Did not Finish". The second short race will commence as soon as possible after the last boat has been finished or the time limit has expired.

15.2 Time limit to complete the long races shall be 3 hours. Boats finishing more than 60 mins after the first boat finishes, or after the time limit, whichever is the earlier, shall be scored "Did not Finish"

This changes rules 35, A4 and A5.

## **16. PROTESTS AND REQUESTS FOR REDRESS**

16.1 Protest forms are available from The Principal Race Officer..

16.2 Protests and requests for redress or reopening shall be delivered to the race office within the time limit.

16.3 The protest time limit is 60 minutes after the last boat has finished the last race of the day.

16.4 Notices will be posted approximately 30 minutes after the protest time limit to inform competitors of hearings in which they are parties or named as witnesses.

16.5 The date the protest will be heard and the time of the first hearing will be included on the posted notice. When possible a notice may also be sent by email to boats named in the protest.

16.6 Hearings will be held in the committee room of the venue club.

16.7 Notices of protests by the race committee or protest committee will be posted to inform boats under rule 61.1(b).

16.8 Breaches of instructions 11.5, 18, 22, 23 and 24 will not be grounds for a protest by a boat. This changes rule 60.1(a).

16.9 Penalties for these breaches may be less than disqualification if the protest committee so decides. The scoring abbreviation for a discretionary penalty imposed under this instruction will be DPI.

16.10 A request for re-opening a hearing shall be delivered within 7 days after the requesting party was informed of the decision. This changes rule 66.

16.11 A request for redress based on a protest committee decision shall be delivered no later than 7 days after the decision was posted. This changes rule 62.2.

## **17. SCORING**

17.1 The Low Point System of Appendix A will apply for all races.

17.2 The number of races required to be completed to constitute a series is 8.

## **18. SAFETY REGULATIONS**

18.1 All boats shall record the boat details and sign the Sign On / Off sheet.

18.2 Boats shall sign on by completing the Sign On / Off sheet before starting in a race. Any boat failing to sign-on as specified may be scored as Did Not Start.

18.3 A boat that retires from a race shall notify the race committee as soon as possible and shall sign off for that race on the Sign On / Off sheet provided on the official notice board. Any boat failing to sign-off as specified may be scored as Did Not Start.

## **19. REPLACEMENT OF CREW OR EQUIPMENT**

Refer to section 19 of the Notice of Race.

## **20. MEASUREMENT CHECKS**

A boat or equipment may be inspected at any time for compliance with the class rules and sailing instructions. A boat can be instructed by the race committee to proceed immediately to a designated area for inspection.

## **21. OFFICIAL BOATS**

Official boats will be marked by displaying the host club burgee.

## **22. SUPPORT BOATS**

Refer to section 14 of the Notice of Race.

## **23. RUBBISH DISPOSAL**

Boats shall not put rubbish in the water. Rubbish may be placed aboard support and race committee boats or stored on boats and disposed of ashore after racing.

## **24. RADIO COMMUNICATION**

While racing, a boat shall not carry equipment capable of making radio transmissions or receiving radio communications that are not available to all competitors, except for equipment provided by the organising authority. This restriction also applies to mobile telephones.

## **26. PRIZES**

26.1 Prizes will be as described in Clause 20 of the Notice of Race.

26.2 Other prizes may be awarded at the sole discretion of the Race Committee.

## **27. DISCLAIMER OF LIABILITY**

27.1 Competitors participate in the regatta entirely at their own risk. See rule 4, Decision to Race.

27.2 The organizing authority, officials, volunteers and paid servants of the venue host club will not accept any liability for material damage or personal injury or death sustained in conjunction with or prior to, during, or after the regatta.

27.3 The organising authority will not be held responsible for the seaworthiness nor the suitability of a boat whose entry is accepted. It remains the responsibility of the crew to ensure that a boat is seaworthy and its equipment is in good condition.

27.4 The organising committee reserves the right to refuse an entry.

## **28 Risk Warning**

Participants are warned that, regardless of the precautions, which might be taken by reasonable and experienced persons, sailing can be a dangerous pursuit and participants are exposed to significant risk of property damage, physical harm and possibly death.

As an indication, these risks may include, but are not limited to:

- The extremes of weather and sea conditions.
- The potential that control of vessels may be lost, resulting in collision with objects and other vessels.
- The sudden movement of the vessel at any time and the possibility that participants may fall or be thrown overboard, resulting in drowning.
- The possibility that participants may be injured by equipment on the vessel.
- The absence of immediate medical care and the likelihood that significant delays may occur before medical care is available.
- Exposure to the elements for extended periods.

**Please note that amendments to these Sailing Instructions issued after 15th October 2011 are shown in "highlight".**

